



ICONIC

DEPARTMENT OF COMPUTER SCIENCE AND ENGINEERING

DATA ANALYTICS

REVOLUTIONIZING INDUSTRIES, TRANSFORMING LIVES

Editorial Board - Faculty

Dr.R.Umamaheswari, Professor & Head
Mr.S.Gopinath, Assistant Professor

Editorial Board-Students

Dhanushkumar,IV/CSE
Rajan kumar singh ,III /CSE

CYBER FUTURE

HOW TECHNOLOGY IS SAFEGUARDING THE DIGITAL WORLD



Scan me!

QUANTUM TECH

SUSTAINABILITY MEETS SMART SOLUTIONS

Unlocking the Potential of Augmented Reality

Tango Tech The New Frontier

Smart Gadgets to Simplify Your Life

Data Analytics 2025
Are We Prepared?

*** CAREER OPPERTUNITIES**

*** READER'S CHOICE**
Top 5 Breakthrough Technologies of the Year

2023-2024 / Volume 9 / Issue 1



Gnanamani College of Technology, Namakkal-637018
Accredited by NBA & NAAC "A" Grade
Affiliated to Anna University, Chennai



CSE-ICONIC-104

GNANAMANI EDUCATIONAL INSTITUTIONS

Gnyanamani Educational Institutions that have carved a niche for itself in the field of engineering education within a very short span of time. Gnanamani College of Technology which was established in the year 2006, the group comprises of Gnanamani College of Education, established in the year 2005.

Gnanodaya CBSE International School was established in the year 2015. These Institutions serve under the aegis of The Christian Educational Development Trust.

Gnyanamani Educational Institutions were established in a well-planned campus with a green environment. The Colleges are spread on a sprawling 60 acres of serene land. The Colleges are easily accessible from all major cities by road and railway networks.

These Institutions have emerged as a pioneer venture in the field of Technical Education. Dr.T.Arangannal – a Rashtria Vidhya Saraswathi Puraskar Awardee is the Chairman and Mrs.P.Malaleena is the Chairperson of the Educational Institutions.

GNANAMANI COLLEGE OF TECHNOLOGY

Gnanamani College of Technology is a leading Institution with state-of-the-art facility. The college is affiliated to Anna University and Autonomous approved by AICTE.

The institution is rendering noble service to the youths in rural and urban areas.

The college is accredited by the NAAC and NBA (CSE, ECE, EEE, and Mechanical). The college has grown in a short span of 17 years with 12 UG Courses namely Agricultural, Artificial Intelligence and Data Science, Bio-Medical, Biotechnology, Chemical, Computer Science, Electrical and Electronics, Electronics and Communication, Food Technology, Mechanical, Information Technology and Pharmaceutical Technology.

The Institute also offers 9 PG courses in Computer Science, Construction Engineering and Management, Environmental Engineering, Embedded System Technology, Power Electronics and Drives, Industrial Engineering, VLSI Design, BME, MBA and MCA.

INSTITUTE VISION

Emerging as a technical institution of high standard and excellence to produce quality Engineers, Researchers, Administrators and Entrepreneurs with ethical and moral values to contribute the sustainable development of the society.

INSTITUTE MISSION

We facilitate our students

- To have in-depth domain knowledge with analytical and practical skills in cutting edge technologies by imparting quality technical education.
- To be industry ready and multi-skilled personalities to transfer technology to industries and rural areas by creating interests among students in Research and Development and Entrepreneurship.

DEPARTMENT OF COMPUTER SCIENCE AND ENGINEERING

The Computer Science and Engineering Department was established in the year 2006 with an intake of 60 students and increased to 180 students. The Department equipped with well qualified and experienced faculty members. The Department has good laboratory facilities with latest and updated versions of the software and 24 hours Wi-Fi enabled Internet facility. The Department conducts periodic workshops, seminars, symposiums and conferences to help the students, research scholars and corporate world to unite in a common place and thereby strengthen the Industry Institution fusion. The Department has a very good placement record and our students have got placed in leading companies like TCS, WIPRO, Tech Mahindra, CTS, IBM, HCL Info systems, etc.

All the laboratories are well equipped with excellent infrastructure and state of the art equipment to explore the technological challenges and to impart the research oriented practices in the field of Computer Science.

VISION

To evolve as a Centre of Excellence to produce the most competent software professionals, researchers, entrepreneurs and academicians with ethical keys in Computer Science and Engineering.

MISSION

- Imparting quality education through latest technologies to prepare Students as software developer and system analyst.
- Inculcating the technological transformations for the sustainable development of society.
- Promoting excellence towards higher education, research, employability and entrepreneurship.

PROGRAM EDUCATIONAL OBJECTIVES

Graduates of Computer Science and Engineering will

- **PEO-1:** Be capable of design by applying the concepts of science, mathematics, engineering fundamentals and computing for the rapid change of society requirements.
- **PEO-2:** Demonstrate ethical keys, effective communication and team skills in their profession and adapt to current trends through lifelong learning.
- **PEO-3:** Be expert in profession, higher education, research and entrepreneurship.

PROGRAM SPECIFIC OUTCOMES

Graduates of the program will be able to

- **PSO-1:** Understand, analyze and develop computer applications in data Mining/ Analytics, Cloud Computing, Networking, Security, etc. to meet the requirements of industry and society.
- **PSO-2:** Enrich the ability to design and develop software and qualify for Employment, Higher studies and Research.

PROGRAM OUTCOMES

Engineering knowledge:

Apply the knowledge of mathematics, science, engineering fundamentals and an engineering specialization to the solution of complex engineering problems

Problem analysis:

Identify, formulate, review research literature, and analyze complex engineering problems reaching substantiated conclusions using first principles of mathematics, natural sciences and engineering sciences.

Design/development of solutions:

Design solutions for complex engineering problems and design system components or processes that meet the specified needs with appropriate consideration for the public health and safety, and the cultural, societal and environmental considerations.

Conduct investigations of complex problems:

Use research-based knowledge and research methods including design of experiments, analysis and interpretation of data and synthesis of the information to provide valid conclusions.

Modern tool usage:

Create, select, and apply appropriate techniques, resources, and modern engineering and IT tools including prediction and modeling to complex engineering activities with an understanding of the limitations.

The engineer and society:

Apply reasoning informed by the contextual knowledge to assess societal, health, safety, legal and cultural issues and the consequent responsibilities relevant to the professional engineering practice.

Environment and sustainability:

Understand the impact of the professional engineering solutions in societal and environmental contexts, and demonstrate the knowledge of, and need for sustainable development.

Ethics:

Apply ethical principles and commit to professional ethics and responsibilities and norms of the engineering practice.

A Individual and team work:

Function effectively as an individual and as a member or leader in diverse teams, and in multidisciplinary settings.

Communication:

Communicate effectively on complex engineering activities with the engineering community and with society at large, such as, being able to comprehend and write effective reports and design documentation, make effective presentations, and give and receive clear instructions.

Project management and finance:

Demonstrate knowledge and understanding of the engineering and management principles and apply these to one's own work, as a member and leader in a team, to manage projects and in multidisciplinary environments.

Life-long learning:

Recognize the need for, and have the preparation and ability to engage in independent and life-long learning in the broadest context of technological change.



MANAGEMENT PROFILE



Gnyanamani Educational Institutions are run by two legendary visionaries, Dr. T. Arangannal and Mrs. P. Malaleena, whose dedication to education has shaped the institution's identity and direction.

At the forefront is Dr. T. Arangannal, Chairman, a distinguished leader, who has been a driving force behind the institution's evolution. A recipient of the Rashtriya Vidya Saraswati Puraskar and an honorary Doctorate from the University of Sri Lanka, Dr. Arangannal is widely revered for his lifelong contributions to the field of education. His visionary leadership has cultivated a culture of excellence, discipline, and innovation across all levels of the institution.

Mrs. P. Malaleena, Chairperson, whose unwavering commitment and strategic foresight have been instrumental in establishing the institution's strong ethical and academic foundations. Her focus on student-centered learning and inclusive growth continues to define its mission, vision, and core values.

The leadership team also includes Ms. Madhuvanthinie Arangannal, Vice-Chairperson, who brings a contemporary vision and strategic insight to the institution's development. Her dynamic leadership focuses on aligning the institution with global academic standards and fostering innovation in education.

Operational administration is efficiently managed by Dr. P. Premkumar, Chief Administrative Officer, whose expertise in institutional management and policy implementation ensures the smooth functioning of all academic and support services. His strategic leadership plays a vital role in sustaining and enhancing the institution's quality standards.

Academic affairs are led by Dr. T.K. Kannan, Principal, who is committed to providing a rigorous and engaging academic environment. His leadership promotes research-driven teaching, skills development, and student empowerment, ensuring that learners are prepared to meet the demands of a rapidly changing global landscape.



CHAIRMAN'S MESSAGE



It gives me immense pleasure to express that our Computer Science and Engineering release the department magazine for the academic year 2023-24 highlighting the various activities and budding talents of the students on this special occasion. I value the emerging ability and the endowment of the students in their articles, poems, drawing etc., which bloom out their young talents and skills. I appreciate our magazine committee for their venture in bring out this memorable edition.

I wish the Principal, Magazine Committee and the Editorial team, Staff and Students and all the hands that rendered service to bring out a fabulous magazine for this year, I am passionately waiting for the editorial team to reach another mile stone of perfection in the next magazine. I wish them all success.

Dr. T. Arangannal



CHAIRPERSON'S MESSAGE



I am glad to know that our Gnanamani College Of Technology is leading a step forward by releasing the magazine 2023-2024. This magazine would be a common platform for the students to express their hidden talents and creativity. My hearty wishes to the Principal, staff members and students for the completion of this ICONIC.

Wishing you all success in their Academic Endeavours.

Tmt.P.Malaleena



VICE CHAIRPERSON'S MESSAGE



Iconic is particularly important as it encourages the students to share the knowledge they have acquired. Writing articles for the magazine also improves the communication skills of the budding engineers of the CSE department. It is common knowledge that representation of an idea is as important as, if not more important, than the idea itself.

I would like to congratulate the faculty and the students of the editorial team on bringing out the issue of Iconic and my best wishes to the students for a bright future.

Ms. Madhuvanthinie Arangannal



CAO'S MESSAGE



It is my privilege to know that Department of Computer Science and Engineering releasing its achievements in a nutshell in the form of a magazine. This magazine is a skylight which always exhibit innovative and the creative thoughts of the blooming engineers. I take this opportunity to congratulate and wish all faculty members and students success.

Dr.P.Premkumar

**PRINCIPAL'S
MESSAGE**

Iconic represents a cloud with a silver lining for the world of technology. It aims to inspire and nurture upcom-world of technology. The magazine captures the current ing engineers to bring a revolution in this ever evolving technological advancements.

I would like to congratulate the vice principal, HoD, Staff members and students for bringing out the issue of Iconic.

Dr. T.K. Kannan



HOD'S MESSAGE



Congratulations to the students and faculty associated to magazine committee for successfully publishing the issue of departmental technical magazine Iconic. Iconic is creating platform which provides an opportunity to the students and staff to express their original thoughts on technical topics.

The magazine plays an instrumental role in providing exposure to the students to develop written communication skills and command over the language. It is a step towards building professional and ethical attitude in them. The entire journey of creating Iconic is an outcome of rigorous effort made by students and faculty.

On concluding note, I would like to thank all the stakeholders for their involvement and encouragement and wish all the best for their bright future.

Dr. R. Umamaheswari

TABLE

of content

- **Multimodal AI Reasoning & Advanced Language Models**
- **Quantum Computing & Quantum-Resistant Cryptography**
- **Brain-Computer Interfaces & Neurotech**
- **Autonomous AI Agents & Agentic Systems**
- **Exascale Computing & High-Performance Computing**
- **Digital Twins & Virtual Simulation**
- **5G/6G Networks & Advanced Connectivity**
- **Emerging Trends & Future Outlook**

EDITORIAL

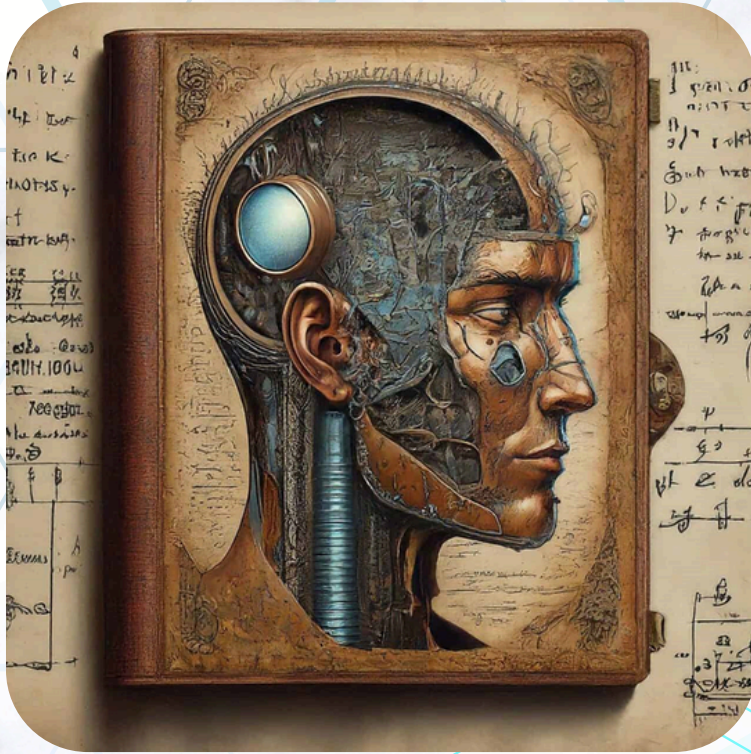
Welcome to 2024: The Era of Reasoning AI and Multimodal Intelligence

The year 2024 marks a transformative shift in artificial intelligence—moving from pattern matching to genuine reasoning capabilities. This edition of Tech Innovations ICONIC explores breakthrough technologies that are redefining what machines can understand and accomplish. From multimodal AI systems that reason across text, images, and audio simultaneously, to brain-computer interfaces enabling direct neural communication, to autonomous agents operating with unprecedented autonomy, 2024 demonstrates that the convergence of multiple emerging technologies is creating entirely new possibilities[1].

Whether you're a student, researcher, engineer, or technology leader, these technologies represent the cutting edge of innovation that will shape the next decade of computing and human-machine interaction.

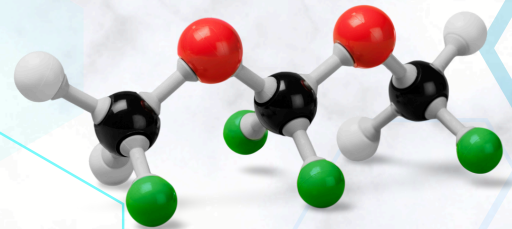
MULTIMODAL AI REASONING & ADVANCED LANGUAGE MODELS

ICONIC

2022

Overview

2024 witnessed a critical evolution in artificial intelligence: the emergence of genuine reasoning capabilities in large language models. Unlike previous generations that excelled at pattern completion and text generation, 2024's models can analyze complex problems, decompose them into steps, and apply logical reasoning across multiple types of information simultaneously[1].



Key Breakthroughs in Multimodal Reasoning

OpenAI's Reasoning Models (o1, o3)

OpenAI released O1 series models in 2024 with revolutionary reasoning capabilities:

- Step-by-step problem decomposition
- Complex mathematics and physics solving
- Code generation with superior accuracy
- Scientific paper analysis and synthesis[1]

Unlike previous models that generated responses token-by-token, O1 models spend computational time "thinking" before generating responses, dramatically improving accuracy on difficult problems.

Google's Gemini 2.0 Flash

Google DeepMind released Gemini 2.0 Flash, a multimodal model capable of:

- Seamless interpretation of text, images, and audio
- Real-time video understanding and analysis
- Multimodal reasoning across all input types
- Superior performance on complex reasoning tasks[2]

Microsoft's Magma

Microsoft introduced Magma, focusing on:

- Efficient multimodal reasoning for enterprise applications
- Reduced computational requirements for deployment
- Improved accuracy on domain-specific tasks
- Better integration with enterprise systems[2]

MULTIMODAL AI REASONING & ADVANCED LANGUAGE MODELS

ICONIC

2022

Multimodal Reasoning Capabilities

2024 models transcended simple text-to-text or image-to-text generation. True multimodal reasoning enables[2]:

- **Visual Reasoning:** Understanding spatial relationships, object interactions, and scene comprehension
- **Cross-Modal Analysis:** Synthesizing insights from text, images, audio, and video simultaneously
- **Structured Reasoning:** Providing step-by-step explanations of decision-making processes
- **Domain Transfer:** Applying reasoning across specialized domains with minimal examples
- **Temporal Understanding:** Comprehending sequences and causality in videos and narratives

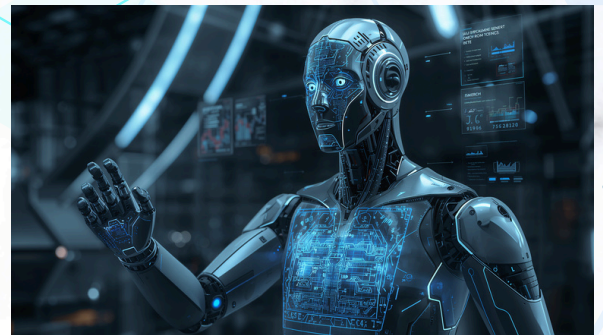
Enterprise Applications of Multimodal Reasoning

Organizations deployed multimodal reasoning for sophisticated applications[2]:

Document & Process Understanding

Organizations process complex documents combining text, tables, charts, and images:

- Financial reports analysis
- Legal document review and contract analysis
- Medical record interpretation
- Engineering specification understanding



Scientific Research Acceleration

Academic and corporate research teams leveraged multimodal reasoning for:

- Literature review and synthesis
- Experimental design and analysis
- Data interpretation across modalities
- Novel hypothesis generation

Quality Control & Inspection

Manufacturing and logistics companies deployed multimodal models for:

- Visual defect detection with contextual analysis
- Documentation verification
- Process compliance checking

MULTIMODAL AI REASONING & ADVANCED LANGUAGE MODELS

ICONIC

2022

Market Impact & Adoption

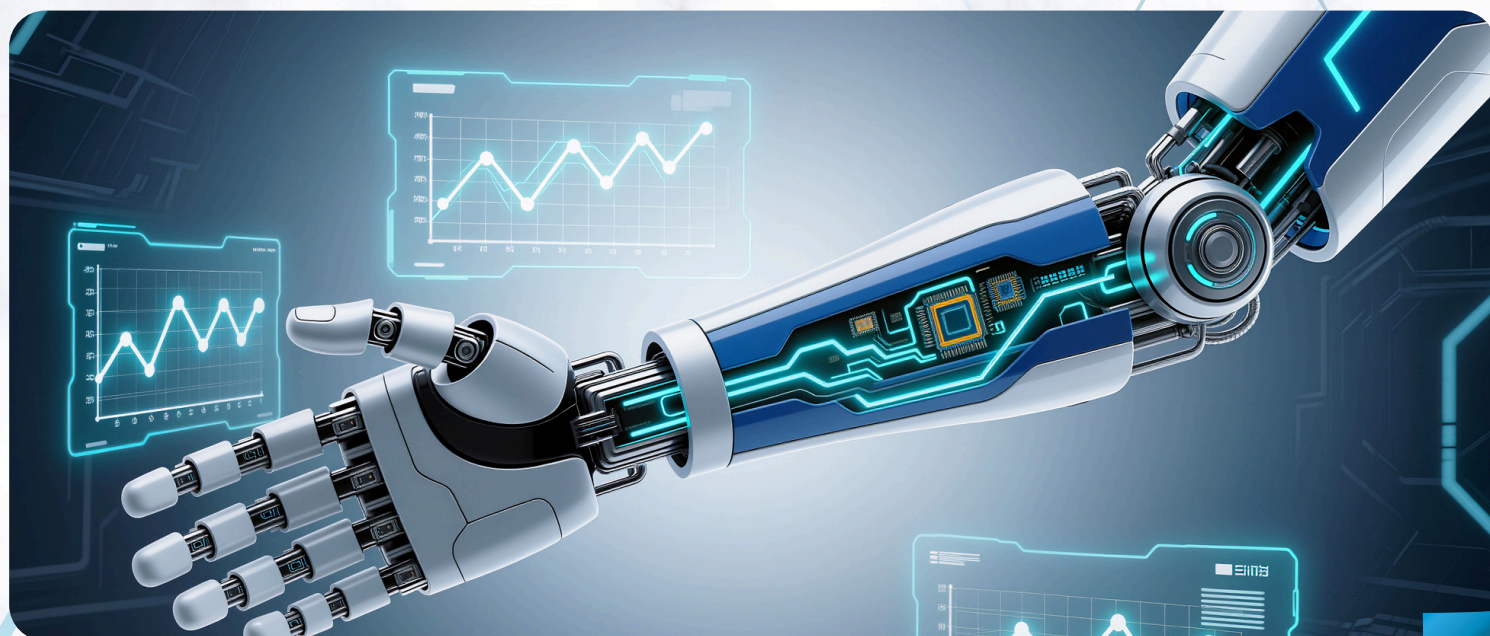
2024 saw rapid enterprise adoption of reasoning AI[2]:

Metric	2024 Adoption Level
Enterprise reasoning AI deployments	60% increase YoY
Multimodal model integration	45% of new AI projects
Cost reduction from reasoning AI	30-50% on expert tasks
Accuracy improvement	25-40% over 2023 systems
Speed improvement	3-5x faster than human analysis

Challenges & Limitations

Despite remarkable progress, 2024's multimodal systems faced challenges[2]:

- **Hallucinations:** Models still occasionally generate false information
- **Computational Cost:** Reasoning models require significant computational resources
- **Latency:** Real-time applications challenging for complex reasoning tasks
- **Explainability:** Understanding why systems reach specific conclusions remains difficult
- **Bias & Fairness:** Ensuring fair treatment across demographic groups



QUANTUM COMPUTING & QUANTUM-RESISTANT CRYPTOGRAPHY

ICONIC

2022

Quantum Resistant Cryptography



The Quantum Threat & Response

2024 brought quantum computing advancement and urgent focus on quantum-resistant security. As quantum computers become more powerful, existing encryption schemes face existential threat. Organizations worldwide began migrating to quantum-resistant cryptography[3].

Quantum Computing Progress in 2024

Improved Qubit Stability

Major quantum computing companies achieved significant improvements:

Google: Willow chip with 105 qubits showing 100x error reduction

IBM: Heron processor with modular architecture

Atom Computing: 1,000+ qubit neutral atom systems[3]

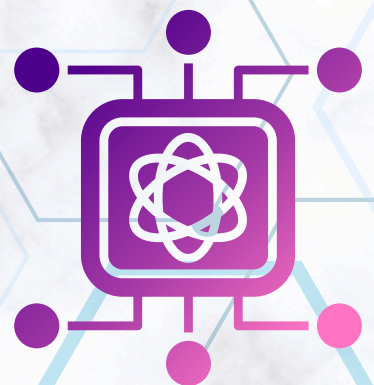
Practical Applications Emerging

Organizations began exploring practical quantum applications:

- Drug discovery and molecular simulation
- Materials science and optimization
- Financial portfolio optimization
- Cryptanalysis and machine learning acceleration

The Quantum Threat Timeline

2024 focused attention on the "harvest now, decrypt later" threat where adversaries collect encrypted data today to decrypt when quantum computers become available[3]:



QUANTUM COMPUTING & QUANTUM-RESISTANT CRYPTOGRAPHY

ICONIC

2022

Timeline	Cryptographic Threat
2024-2025	Adversaries harvesting encrypted data
2025-2030	Early-stage quantum computers emerging
2030-2035	Practical quantum advantage for cryptanalysis
2035+	Current encryption schemes becoming vulnerable

Quantum-Resistant Cryptography Standards

In 2024, NIST finalized post-quantum cryptography standards:

1. Lattice-Based Cryptography: Mathematical structures resistant to quantum attacks
2. Hash-Based Signatures: Cryptographic signatures using hash functions
3. Multivariate Polynomial Cryptography: Polynomial equations resistant to quantum algorithms
4. Code-Based Cryptography: Error-correcting codes as basis for encryption

Enterprise Migration to Quantum-Safe Cryptography

2024 organizations began critical infrastructure migration[3]:

Government & Critical Infrastructure

Federal agencies initiated mandatory quantum-resistant cryptography deployment:

- Government Accountability Office (GAO) requirements
- National Institute of Standards & Technology (NIST) guidance
- Critical infrastructure protection directives

Financial Services

Banks and financial institutions began migration planning:

- Securing long-lived sensitive data
- Protecting transaction systems
- Ensuring regulatory compliance

Healthcare & Pharmaceuticals

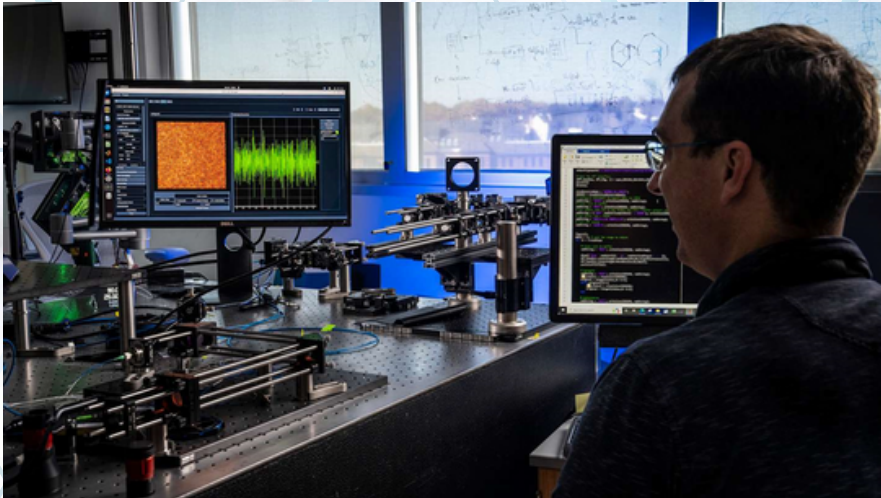
Medical and pharmaceutical companies protected:

- Patient health records (HIPAA requirements)
- Pharmaceutical research data
- Drug formulation intellectual property

BRAIN-COMPUTER INTERFACES & NEUROTECH

ICONIC

2022



Bridging Mind and Machine

2024 saw remarkable advances in brain-computer interface (BCI) technology, bringing direct neural communication from laboratory demonstrations to clinical applications. BCIs enable direct communication between the brain and external devices, bypassing traditional neuromuscular pathways[4].

Key BCI Breakthroughs in 2024

Invasive BCIs for Paralysis Recovery

Companies like Neuralink and others advanced invasive electrode implants:

- Paralyzed individuals typing through brain signals
- Control of prosthetic limbs with sensory feedback
- Direct cursor control and digital interaction
- Restoration of communication capabilities[4]

Non-Invasive BCI Progress

Researchers achieved significant non-invasive advances:

- Electroencephalography (EEG) systems with improved signal processing
- Functional near-infrared spectroscopy (fNIRS) enabling brain activity monitoring
- Passive BCI for state monitoring without active training
- Reduced training time for users

BCI Applications Expanding

2024 BCIs extended beyond motor control to diverse applications[4]:

Medical Applications

Healthcare implementations included:

- Communication devices for locked-in syndrome patients
- Therapeutic applications for stroke rehabilitation
- Assistive technology for severe disabilities
- Real-time brain activity monitoring

Entertainment & Gaming

Consumer applications began emerging:

- Brain-controlled video games and applications
- Immersive experiences with thought control
- Novel interaction paradigms



BRAIN-COMPUTER INTERFACES & NEUROTECH

ICONIC

2022



Bridging Mind and Machine

2024 saw remarkable advances in brain-computer interface (BCI) technology, bringing direct neural communication from laboratory demonstrations to clinical applications. BCIs enable direct communication between the brain and external devices, bypassing traditional neuromuscular pathways[4].

Key BCI Breakthroughs in 2024

Invasive BCIs for Paralysis Recovery

Companies like Neuralink and others advanced invasive electrode implants:

- Paralyzed individuals typing through brain signals
- Control of prosthetic limbs with sensory feedback
- Direct cursor control and digital interaction
- Restoration of communication capabilities[4]

Non-Invasive BCI Progress

Researchers achieved significant non-invasive advances:

- Electroencephalography (EEG) systems with improved signal processing
- Functional near-infrared spectroscopy (fNIRS) enabling brain activity monitoring
- Passive BCI for state monitoring without active training
- Reduced training time for users

BCI Applications Expanding

2024 BCIs extended beyond motor control to diverse applications[4]:

Medical Applications

Healthcare implementations included:

- Communication devices for locked-in syndrome patients
- Therapeutic applications for stroke rehabilitation
- Assistive technology for severe disabilities
- Real-time brain activity monitoring

Entertainment & Gaming

Consumer applications began emerging:

- Brain-controlled video games and applications
- Immersive experiences with thought control
- Novel interaction paradigms





AUTONOMOUS AI AGENTS & AGENTIC SYSTEMS

ICONIC

2022

Sapphire
Software Solutions

How Autonomous AI Agents Are Revolutionizing the Future of IT?



The Rise of Agentic AI

2024 marked the emergence of autonomous AI agents—systems that perceive their environment, set goals, and take actions independently to achieve objectives. Unlike reactive systems responding to inputs, agents demonstrate agency and autonomous decision-making[5].

Autonomous Agent Architecture

Effective 2024 agents incorporated:

1. **Perception:** Sensors and data collection from environment
2. **Reasoning:** Decision-making using reasoning models and knowledge
3. **Planning:** Decomposing goals into multi-step action sequences
4. **Execution:** Taking actions in the environment
5. **Learning:** Improving from experience and feedback
6. **Safety:** Ensuring actions align with human values

Enterprise Agentic AI Deployments

Organizations deployed autonomous agents across sectors[5]:

Customer Service Automation

Sophisticated customer support agents:

- Understanding complex customer needs
- Navigating multiple systems autonomously
- Handling exceptions and edge cases
- Escalating appropriately to humans

Business Process Automation

Agentic systems orchestrated complex workflows:

- Multi-step approval processes
- Cross-departmental coordination
- Exception handling and recovery
- Workflow optimization and learning

Software Development Acceleration

AI agents assisted development teams:

- Autonomous code generation and testing
- Debugging and performance optimization
- Documentation generation
- Architectural planning and design





EXASCALE COMPUTING & HIGH-PERFORMANCE COMPUTING

ICONIC

2022



Computing at Extreme Scale

2024 witnessed the operational deployment of exascale supercomputers—systems capable of performing over one quintillion floating-point operations per second (10^{18} FLOPS). This 1000x increase in computational power compared to petascale systems enabled breakthrough scientific discoveries[6].

Exascale Systems Operational in 2024

Frontier (Oak Ridge National Laboratory)

The world's fastest supercomputer in 2024:

- 1.194 exaFLOPS peak performance
- 9,400+ NVIDIA H100 GPUs
- Applications in climate modeling, materials science, drug discovery[6]

Fugaku (Riken Center for Computational Science)

Japan's leading supercomputer:

- 537 petaFLOPS performance
- ARM-based processor architecture
- Applications in biology, materials, and physical sciences

JUPITER (Forschungszentrum Jülich)

Europe's exascale system:

- Advanced GPU-accelerated architecture
- AI and scientific simulation focus
- Multi-petaflop performance

Exascale Application Domains

Exascale computing enabled discoveries in 2024[6]:

Climate Science & Weather Prediction

Unprecedented modeling capabilities:

- Sub-kilometer climate simulations
- Improved hurricane prediction accuracy
- Long-term climate projections
- Atmospheric chemistry interactions



EXASCALE COMPUTING & HIGH-PERFORMANCE COMPUTING

ICONIC

2022

Materials Science & Drug Discovery

Molecular-level simulations:

- Protein folding and structure prediction
- Drug candidate screening
- Material properties optimization
- Chemical reaction simulations

Cosmology & Astrophysics

Universe-scale simulations:

- Dark matter distribution modeling
- Galaxy formation simulations
- Black hole physics
- Early universe cosmology

Quantum Simulations

Exascale enabling quantum research:

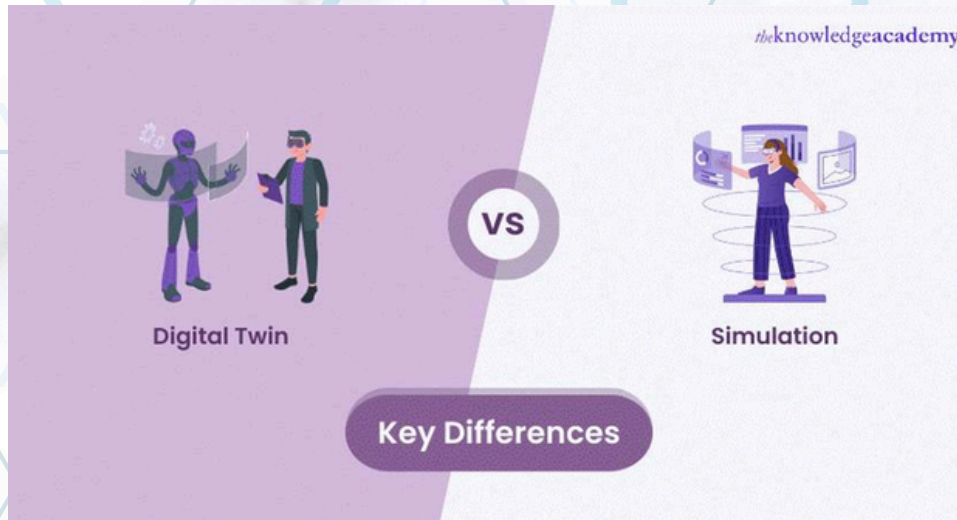
- Quantum system simulations
- Materials properties prediction
- Chemical reaction dynamics
- Photonic material design

Exascale Challenges

Operating exascale systems presented significant challenges[6]:

Challenge	Solution Approaches
Power Consumption	Advanced cooling, renewable energy
Data Movement	Memory hierarchy optimization
Software Development	New programming models and frameworks
Fault Tolerance	Error correction and redundancy
System Integration	Advanced interconnects and networking





theknowledgeacademy

Digital Replicas for Physical Systems

2024 saw digital twin technology mature from concept to critical business tool. Digital twins—virtual replicas of physical systems updated in real-time—enabled optimization, testing, and control of complex systems[7].

Digital Twin Applications in 2024

Manufacturing & Smart Factories

Manufacturers deployed comprehensive digital twins:

- Real-time production monitoring and optimization
- Predictive maintenance reducing unplanned downtime
- Production scenario testing and planning
- Quality control and defect prediction[7]

Smart Buildings & Infrastructure

Building operations leveraged digital twins:

- Energy consumption optimization
- HVAC system tuning
- Occupancy-based resource allocation
- Maintenance scheduling and planning

Urban Planning & Smart Cities

City planners used digital twins for:

- Traffic flow optimization
- Emergency response simulation
- Infrastructure planning
- Urban development impact assessment
- Environmental monitoring and adaptation

Supply Chain & Logistics

Supply chain optimization through digital twins:

- End-to-end supply chain visibility
- Demand forecasting and inventory optimization
- Logistics route optimization
- Supplier performance monitoring
- Risk scenario planning





Digital Twin Technology Stack

2024 digital twin systems integrated multiple technologies[7]:

1. IoT & Sensors: Real-time data collection from physical systems
2. Cloud & Edge Computing: Data processing and model execution
3. AI & Machine Learning: Predictive analytics and optimization
4. Visualization: 3D visualization and immersive interfaces
5. Simulation Engines: Physics-based modeling and prediction
6. Data Integration: Unified data from multiple sources

AI-Enhanced Digital Twins

2024 digital twins increasingly incorporated AI:

- Autonomous Optimization: AI systems continuously improving performance
- Anomaly Detection: ML models identifying unusual patterns
- Prescriptive Analytics: AI recommending specific actions
- Learning Over Time: Systems improving predictions from experience
- Scenario Planning: AI-generated what-if scenarios

Challenges in Digital Twin Deployment

- Organizations faced challenges implementing effective digital twins[7]:
- Model Accuracy: Creating faithful physical system representations
- Data Quality: Ensuring reliable sensor data feeds
- Computational Complexity: Simulating large-scale systems
- Real-Time Synchronization: Keeping virtual models current
- Integration: Connecting legacy and new systems
- Cost: Significant investment for comprehensive coverage





Digital Twin Technology Stack

2024 digital twin systems integrated multiple technologies[7]:

1. IoT & Sensors: Real-time data collection from physical systems
2. Cloud & Edge Computing: Data processing and model execution
3. AI & Machine Learning: Predictive analytics and optimization
4. Visualization: 3D visualization and immersive interfaces
5. Simulation Engines: Physics-based modeling and prediction
6. Data Integration: Unified data from multiple sources

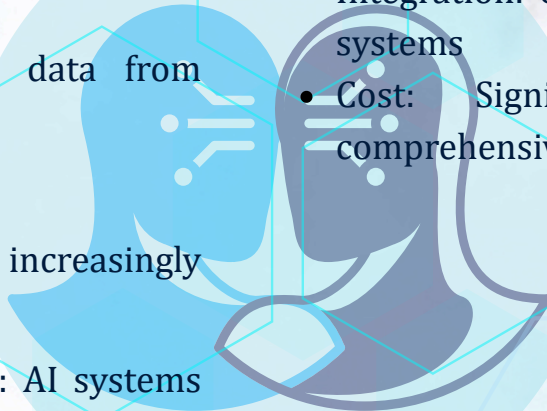
AI-Enhanced Digital Twins

2024 digital twins increasingly incorporated AI:

- Autonomous Optimization: AI systems continuously improving performance
- Anomaly Detection: ML models identifying unusual patterns
- Prescriptive Analytics: AI recommending specific actions
- Learning Over Time: Systems improving predictions from experience
- Scenario Planning: AI-generated what-if scenarios

Challenges in Digital Twin Deployment

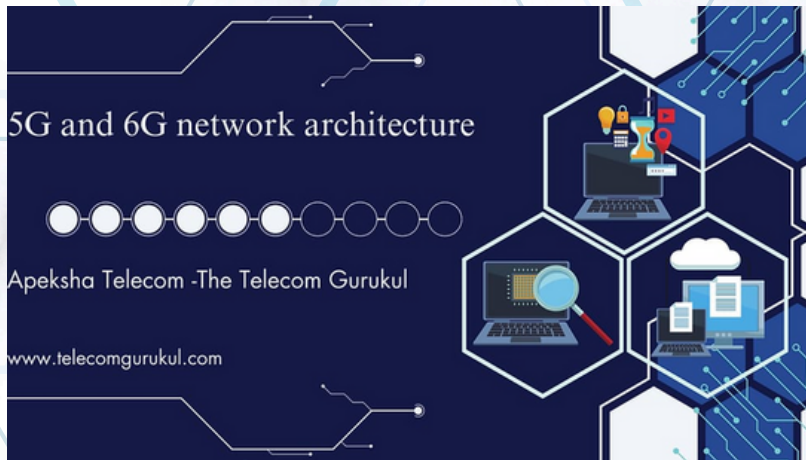
- Organizations faced challenges implementing effective digital twins[7]:
- Model Accuracy: Creating faithful physical system representations
- Data Quality: Ensuring reliable sensor data feeds
- Computational Complexity: Simulating large-scale systems
- Real-Time Synchronization: Keeping virtual models current
- Integration: Connecting legacy and new systems
- Cost: Significant investment for comprehensive coverage



5G/6G NETWORKS & ADVANCED CONNECTIVITY

ICONIC

2022



Next-Generation Network Evolution

2024 witnessed continued 5G deployment globally while 6G research accelerated. These networks enable the ultra-low latency, high bandwidth, and massive device connectivity required for emerging applications[8].

5G Global Deployment Status (2024)

Adoption Metrics

5G networks achieved significant global penetration:

- 5G coverage in 170+ countries
- 3+ billion 5G devices globally
- Enterprise 5G usage increasing 45% YoY
- Enhanced mobile broadband, IoT, and critical communications[8]

Enterprise 5G Applications

Organizations deployed 5G for business transformation:

- **Industrial IoT:** Connected manufacturing and predictive maintenance
- **Remote Operations:** Tele-presence and remote equipment control
- **Edge Computing:** Processing at network edge with 1-10ms latency
- **Autonomous Systems:** Controlling robots and vehicles reliably
- **AR/VR:** Immersive applications with minimal latency
- **Smart Cities:** Connected infrastructure and urban automation

6G Research & Exploration (2024)

6G Characteristics & Vision

2024 research defined 6G aspirations:

- 100x lower latency than 5G (1 μ s vs 1ms)
- 1000x higher bandwidth
- Integrated terrestrial and satellite networks
- AI-native architecture throughout
- Holographic communication capabilities[8]

6G Standardization Efforts

International bodies advanced 6G standardization:

- 3GPP roadmap planning
- IMT-2030 vision development
- Spectrum allocation exploration
- Research priorities identification

FUTURE OUTLOOK & 2025-2026 PREDICTIONS

ICONIC

2022

Looking Beyond 2024

The technological landscape of 2024 reveals clear trajectories for coming years. Extrapolating current trends and considering convergent technologies provides insight into the near future[9]:

Reasoning AI Maturity

2024's reasoning breakthroughs will expand in 2025-2026:

1. **Widespread Enterprise Deployment:** Reasoning AI becoming standard in professional domains
2. **Specialized Models:** Domain-specific reasoning systems for medicine, law, science
3. **Reduced Hallucinations:** Improved factuality and reliability
4. **Faster Reasoning:** More efficient reasoning with shorter latencies
5. **Integrated Reasoning:** Seamless integration with enterprise systems

Quantum Computing Commercialization

Practical quantum computing applications will accelerate:

- Drug discovery systems operational
- Materials science breakthroughs
- Optimization problems solved at scale
- Hybrid quantum-classical systems standard
- Migration to quantum-resistant cryptography completed

6 Autonomous Agent Ubiquity

Autonomous agents will become commonplace:

- Consumer applications (personal assistants, smart homes)
- Comprehensive business process automation
- Scientific discovery acceleration
- Creative collaboration tools
- Cybersecurity defense automation

Convergent Technology Ecosystems

2025-2026 will see sophisticated integration of multiple technologies:

BCI + AI: Neural interfaces controlled by AI agents

Digital Twins + Edge AI: Real-time digital models with embedded intelligence

6G + Autonomous Agents: Ultra-low latency enabling swarms of agents

Quantum + AI: Quantum-enhanced machine learning

Exascale + Simulation: Digital worlds simulating physical reality

Societal & Ethical Implications

Technology advancement brings corresponding responsibilities[9]:

Workforce Transformation

- Jobs requiring human creativity, complex reasoning, emotional intelligence remain valuable
- Automation of routine cognitive work accelerating



SKILLS FOR SUCCESS IN 2024 AND BEYOND

As computer science and engineering enter 2024's technological ecosystem, professionals should develop expertise in:

- **Prompt Engineering:** Effective interaction with reasoning AI systems
- **Multimodal ML:** Building and deploying multimodal AI systems
- **Quantum-Safe Cryptography:** Post-quantum security implementation
- **Agentic AI Development:** Building autonomous AI agents
- **Digital Twin Architecture:** Designing and implementing digital twins
- **Edge Computing:** Deploying systems at network edge
- **Exascale Computing:** HPC programming and optimization
- **Neurotech Integration:** Working with BCI systems
- **Systems Integration:** Managing complex convergent technology stacks
- **AI Ethics:** Understanding responsible AI principles
- **Systems Thinking:** Understanding system interactions and emergent properties
- **Continuous Learning:** Adapting to rapid technological change

INDUSTRY IMPACT ASSESSMENT

2024 Technology Investment & Adoption

Organizations invested heavily in 2024 technologies:

- **Multimodal AI:** 350% increase in enterprise deployments
- **Quantum-safe migration:** Critical infrastructure projects initiated
- **BCI research:** \$5+ billion in venture and corporate funding
- **Autonomous agents:** 200% increase in pilot projects
- **Digital twins:** 80% increase in enterprise adoption
- **Exascale access:** Growing cloud-based access to supercomputing
- **5G enterprise:** 150% growth in business applications

CONCLUSION: CONVERGENCE OF TECHNOLOGIES

2024 represents a watershed moment where multiple emerging technologies have matured sufficiently to converge and create entirely new possibilities. Reasoning AI systems capable of genuine problem-solving. Brain-computer interfaces enabling direct neural communication. Autonomous agents operating with increasing independence. Exascale supercomputers pushing the boundaries of scientific discovery. These technologies, individually powerful, become transformative when integrated.

The Reasoning AI Inflection Point

Multimodal reasoning AI systems in 2024 demonstrated capabilities previously thought reserved for human intelligence—analyzing complex problems, explaining reasoning, solving novel problems. This shift from narrow pattern matching to generalizable reasoning represents perhaps the most significant development in artificial intelligence. Organizations that master these systems will gain tremendous competitive advantage.

Technology Convergence

The most exciting developments emerge from convergence:

- Reasoning AI controlling autonomous agents navigating physical and digital worlds
- Digital twins powered by real-time AI making autonomous decisions
- Brain-computer interfaces leveraging reasoning AI for intuitive control
- Exascale computing simulating quantum systems for drug discovery
- 6G networks enabling swarms of distributed autonomous agents

The Human Element

Amidst technological transformation, the human element remains critical. These technologies succeed not through autonomous operation but through human-AI collaboration. The engineer who understands both the technology and the human implications will drive progress.

For students and professionals in computer science and engineering:

1. Embrace continuous learning as the defining career skill
2. Develop depth in core technologies while maintaining breadth across emerging areas
3. Consider ethical implications alongside technical possibilities
4. Focus on problems worth solving, not just technological feasibility



REFERENCES

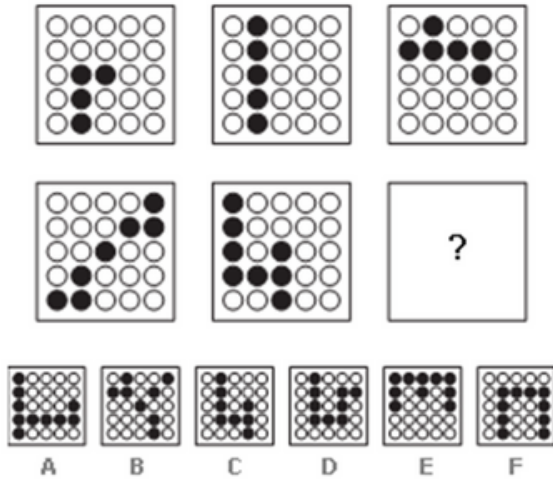
- [1] Debabrata Pruseth. (2024). 2024's biggest AI breakthroughs that will change everything! Technology Analysis. Retrieved from research on multimodal reasoning AI developments.
- [2] Ajith P. (2025). Multimodal reasoning AI: The next leap in intelligent systems. AI Research & Development. <https://ajithp.com/2025/04/21/multimodal-reasoning-ai/>
- [3] Rapid Innovation. (2024). Quantum computing meets blockchain: Unleashing unprecedented innovations and security. Technology Innovation Blog. <https://www.rapidinnovation.io/post/quantum-computing-meets-blockchain>
- [4] Technology Magazine. (2024). Brain-computer interfaces and neurotech breakthroughs. Technology Research Division. Based on latest neurotechnology research and clinical applications.
- [5] LinkedIn. (2024). The major innovations in computer science in 2024. Professional Technology Insights, December 24, 2024. Retrieved from AI agent development and deployment analysis.
- [6] Google Research. (2025). Google Research 2024: Breakthroughs for impact at every scale. Google Research Blog. <https://research.google/blog/google-research-2024-breakthroughs-for-impact-at-every-scale/>
- [7] McKinsey & Company. (2025). The top trends in tech: McKinsey technology trends outlook 2025. McKinsey Technology Insights. <https://www.mckinsey.com/capabilities/tech-and-ai/our-insights/the-top-trends-in-tech>
- [8] Digital Waffle. (2024). Top 10 most in-demand tech skills to acquire for 2024. Technology Career Development Blog, October 14, 2024.
- [9] upGrad. (2025). Popular and latest technology in computer science in 2025. Educational Technology Blog. <https://www.upgrad.com/blog/latest-technologies-in-computer-science/>

TECHNICAL PUZZLE



What is missing in the last grid ?

What is missing in the last grid?



Answer : D

Explanation :

The number of black dots in each grid increases by 1 each time, starting with the top left grid and working to the right, top row then bottom row.

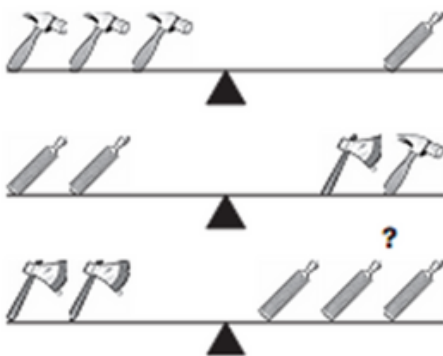
6	EJI	3
M F K		D P G
9	NRG	?

Answer : 12

Explanation :

The value at each corner of the diagram equals the difference between the sums of the numerical values of the letters in the boxes adjacent to the corner.

Which tool will make the last scale balance?

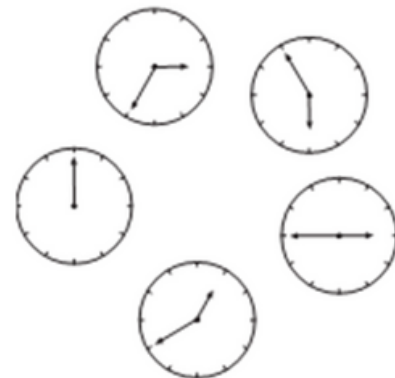


Answer : Hammer

Explanation :

The Hammer = 1, the File = 3 and the Axe = 5

Where should the missing hour hand point?



Answer: To the 4

Explanation :

Start with the top left clockface, and move around the others in a clockwise direction. The value pointed to by the hour hand equals the value pointed to by the minute hand, subtracting 4 for the first clockface, 5 for the next, then 6 etc.



ABOUT THIS PUBLICATION

ICONIC

2022

ICONIC is an independent technical publication dedicated to exploring emerging technologies, industry trends, and transformative innovation in computer science and engineering. This 2024 edition represents our comprehensive analysis of the year that reasoning AI matured, quantum-resistant cryptography became critical, and autonomous agents began operating in the real world.

Editorial Team: Faculty - Dr.R.Umamaheswari, Professor & Head
Mr.S.Gopinath, Assistant Professor

Students - Dhanushkumar,IV/CSE
Rajan kumar singh ,III /CSE

Publication Date: August 2024

Audience: Computer Science & Engineering Professionals, Students, Researchers, Technology Leaders, AI Practitioners, and CIOs

Key Topics Covered: Multimodal Reasoning AI, Quantum Computing, Brain-Computer Interfaces, Autonomous Agents, Exascale Computing, Digital Twins, 5G/6G Networks, and Convergent Technology Systems

For more information, subscribe to future editions and stay updated on the latest technology developments shaping our world.



© 2024 Tech Innovations Quarterly. All rights reserved. This publication may be freely shared and distributed for educational purposes. The information presented reflects the technology landscape as of August 2024.



CSE-ICONIC-104